

REALTEK

Realtek Android Simple Configure Wizard User Guide

Android Simple Configure Wizard User Guide

Realtek

Version: 3.0

This document is subject to change without notice. The document contains Realtek confidential information and must not be disclosed to any third party without appropriate NDA.

CHANGE HISTORY

VERSION	DATE	REMARKS
1.0	2014/08/25	Initial Release
2.0	2015/08/15	Refined simple config
3.0	2016/08/10	Refined simple config

Realtek

Contents

1.	ANDROID APP USAGE	1
2.	CONFIGURE SERVICE.....	2
2.1	WiFi CONNECTION	2
2.2	CONFIGURE PROGRESS	4
3	DISCOVERY SERVICE.....	6
4	CONTROL SERVICE	7
4.1	RENAME DEVICE	7
4.2	REMOVE DEVICE	8
4.3	CONNECT TO OTHER AP.....	9
5	REFERENCE.....	10

1. Android APP Usage

Offline install the APK file on an Android device

This is the document describes how to configure wifi client applications for simple config. The code base is Android 4.4.2(API19). You should have Simple Config Wizard App is the .apk file



Transfer the APK via USB

1. Connect the Android device to the laptop/workstation with the USB cable. The device should raise the USB connected notification. The laptop/workstation should respond by showing the device as an external storage device.
2. On the laptop/workstation:
 - I. Open the external storage device. There should be a folder (directory) called download in the device
 - II. Copy the APK file into the download folder
 - III. Disconnect the external storage device
3. On the Android device:
 - I. Start the File Manager app
 - II. Navigate to the SD Card (also known as External Storage)
 - III. Scroll down the SD Card directory to find the download folder
 - IV. Navigate into the download folder
 - V. The APK file should be there
 - VI. Press the APK file to start the installation

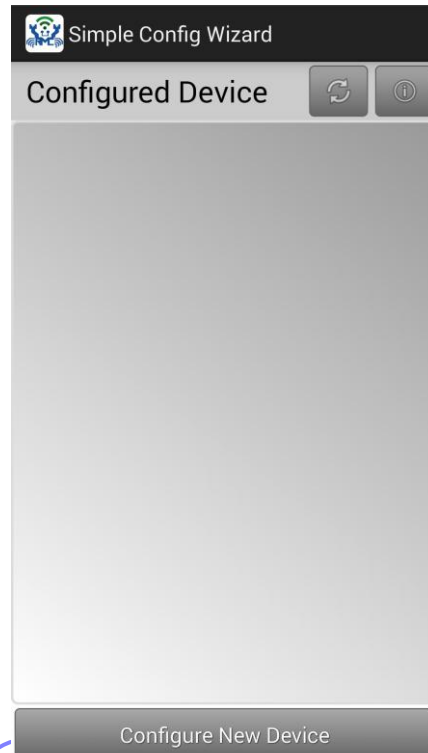
There are three service on the Simple config Wizard APP :

- A. Configure Service
- B. Discovery Service
- C. Control Service
 - Rename Device
 - Remove Device

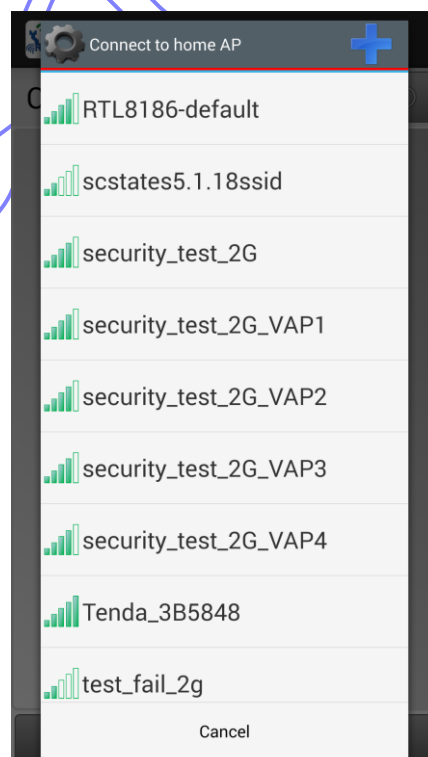
2. Configure Service

2.1 WiFi Connection

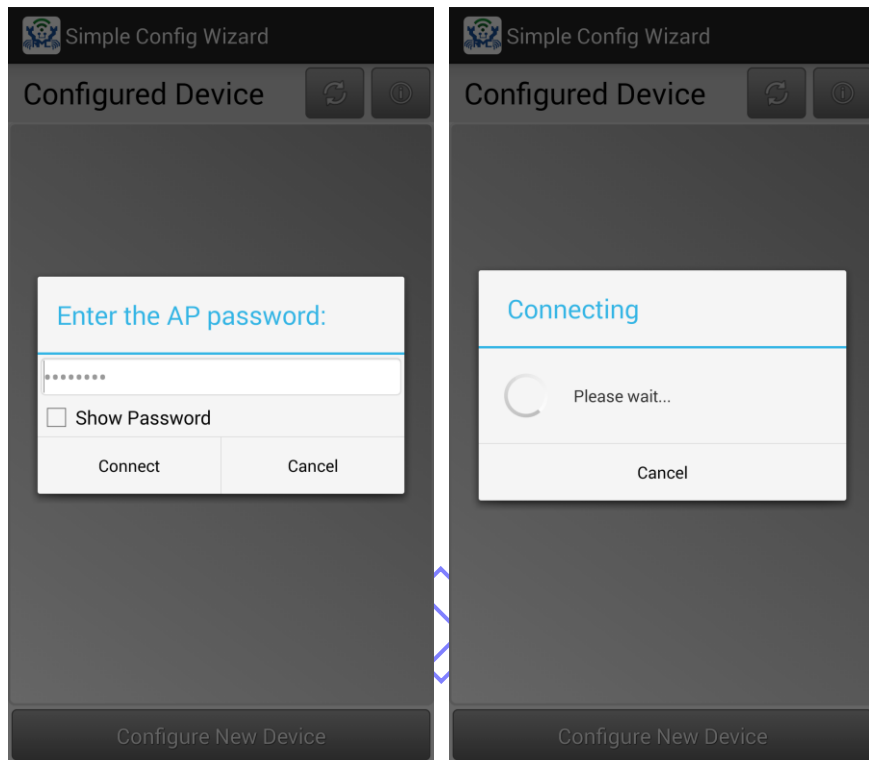
(1) Click the simple config wizard app icon on your android phone.



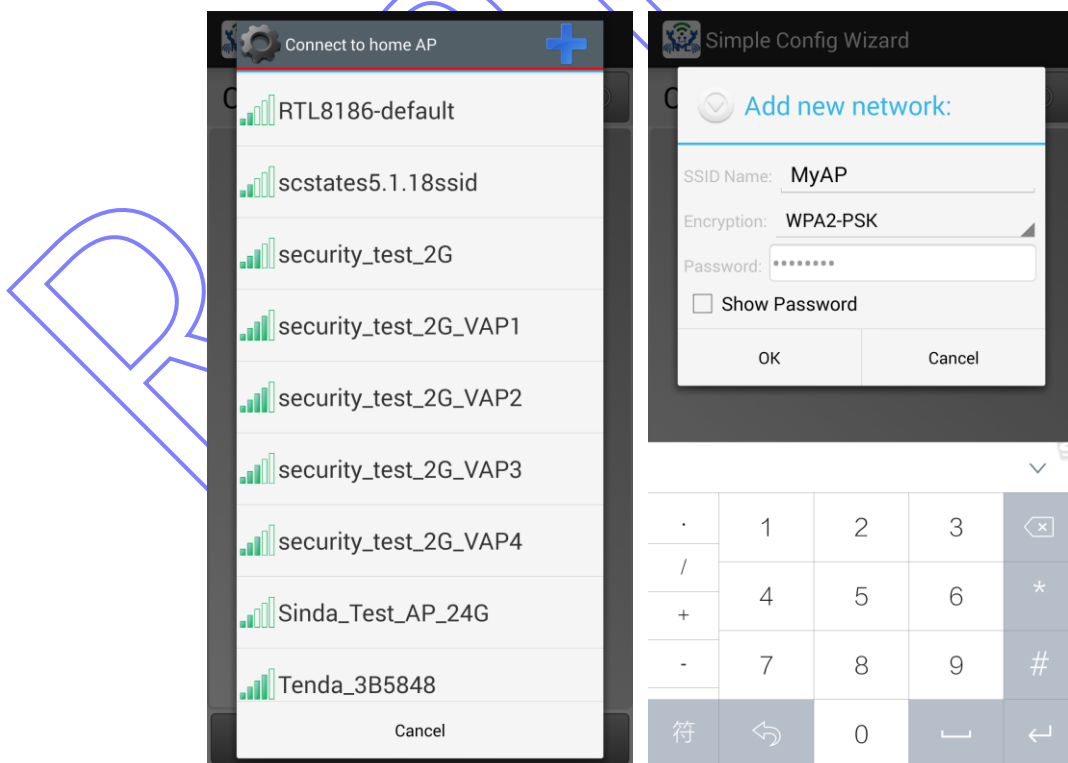
(2) Click the “Configure New Device” to get WiFi network list.



(3) Click one home AP, and the dialog popup if it needs wifi password. Input the correct password and click “Connect” button

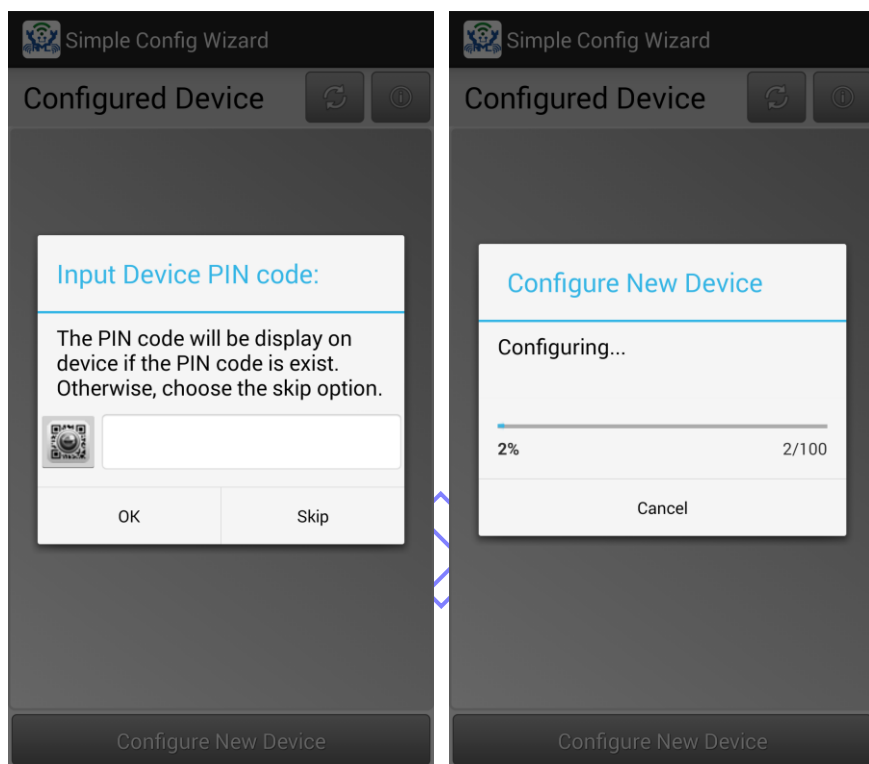


P.S. : You can push the upper right button if you need to add one AP. You should key in the new AP's name, encryption type and password. Then, click “OK” to connect it.

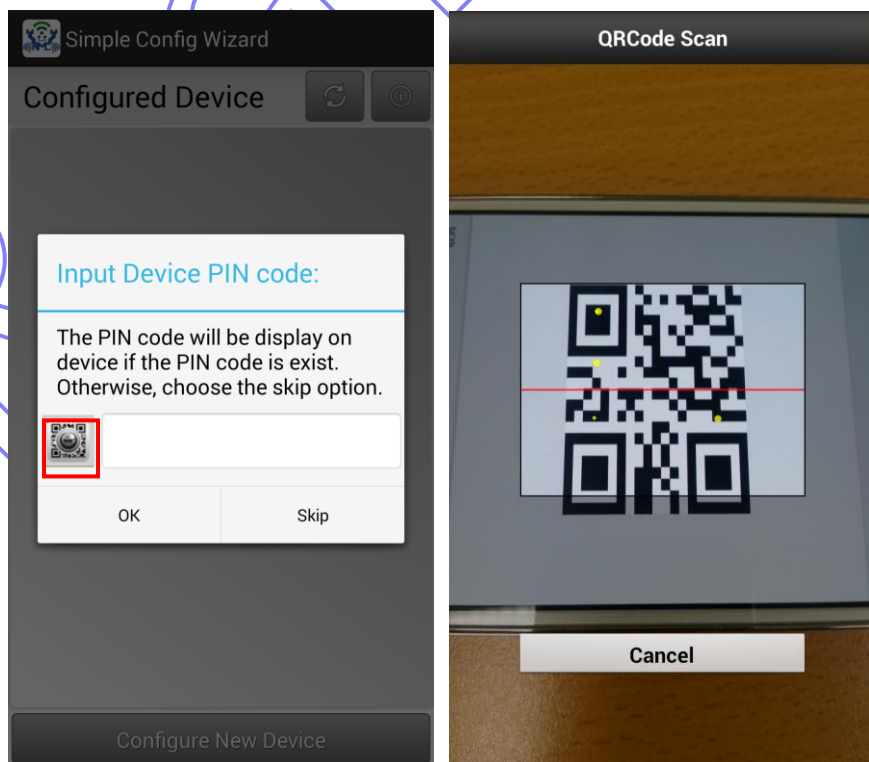


2.2 Configure Progress

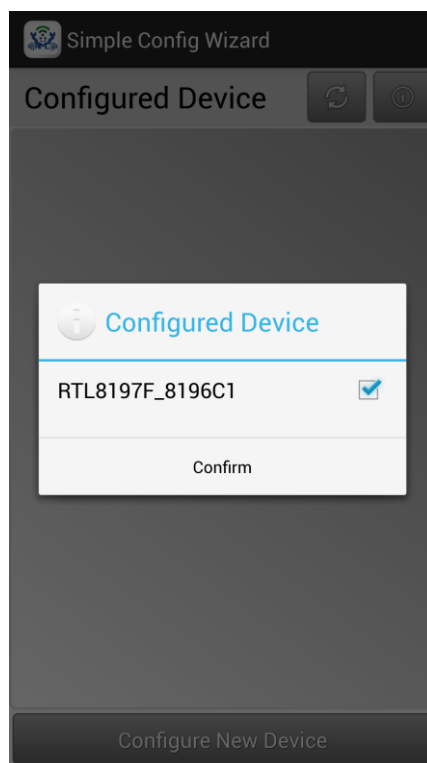
- (1) Before start configuring, key in the device's PIN code if PIN code is needed, and then click "OK". Otherwise, click "Skip" button to execute configure.




P.S. You can also use QR code scanner to capture QR code if the device's QR code is exist.

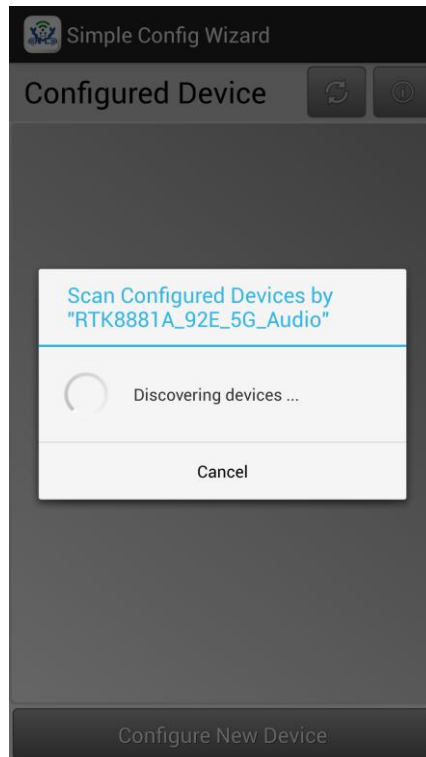


(2) After configuring, the result will display.



3 Discovery Service

(1) Click the upper right button  to scan device.



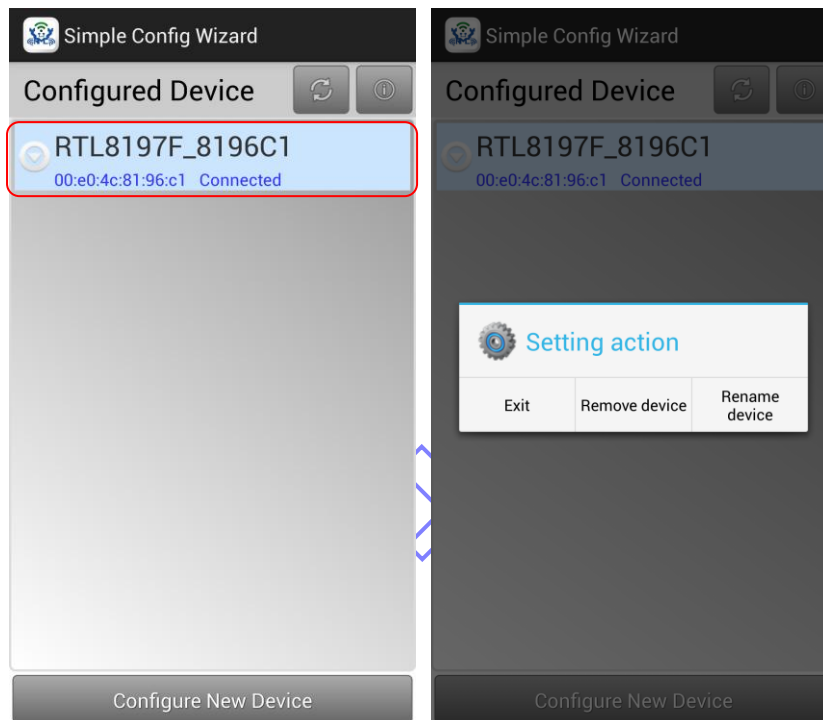
(2) The scan result will display. The connected device's information will be shown below.



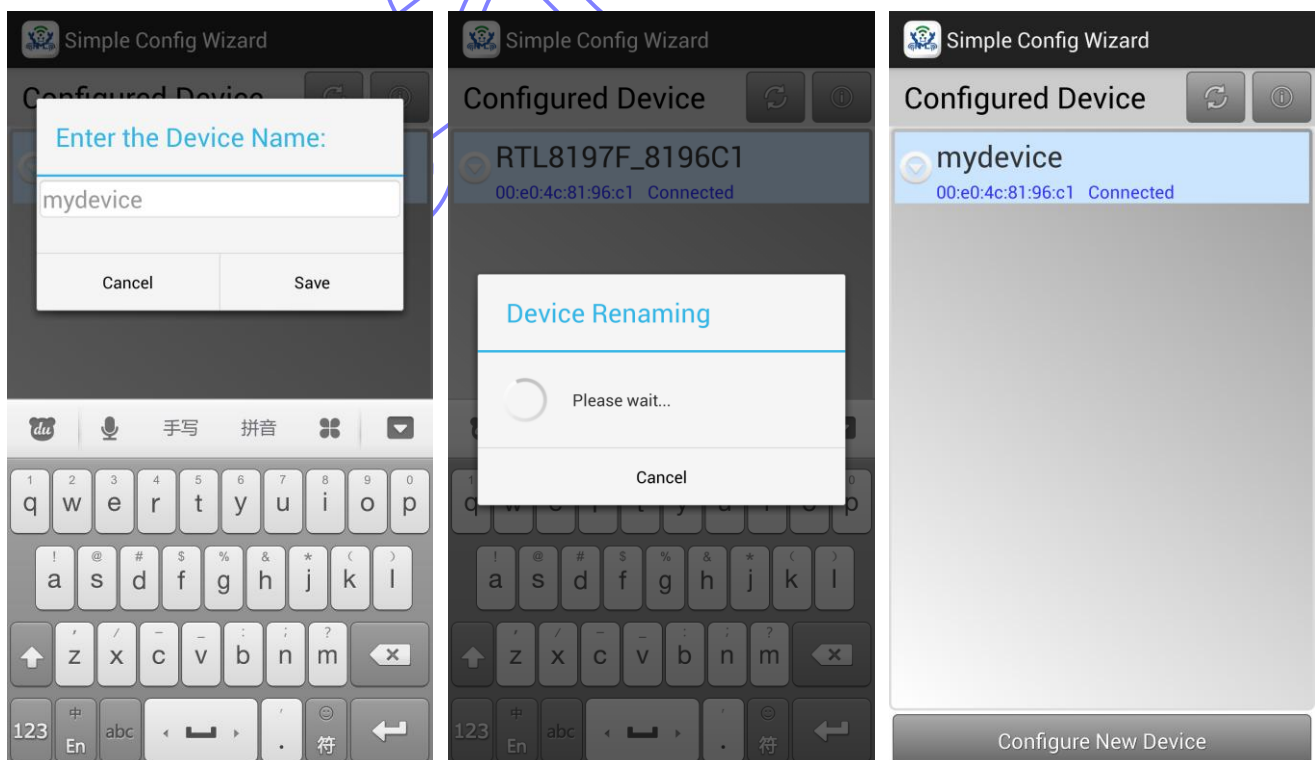
4 Control Service

4.1 Rename Device

(1) Select one device to operate, such as RTL8197F_8196C1.

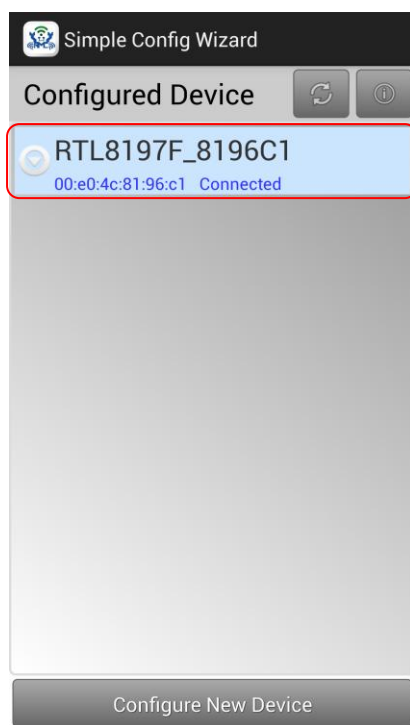


(2) Select “Rename device” operation, and key in new device’s name. Then, click “Save” button to change the device’s name.

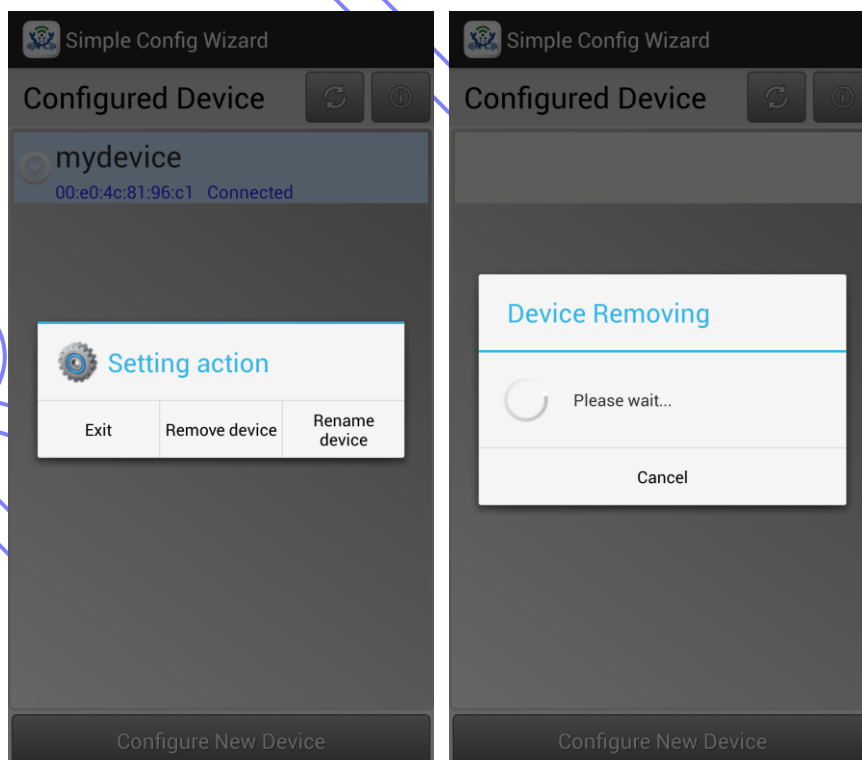


4.2 Remove Device

(1) Select one device to operate, such as RTL8197F_8196C1.

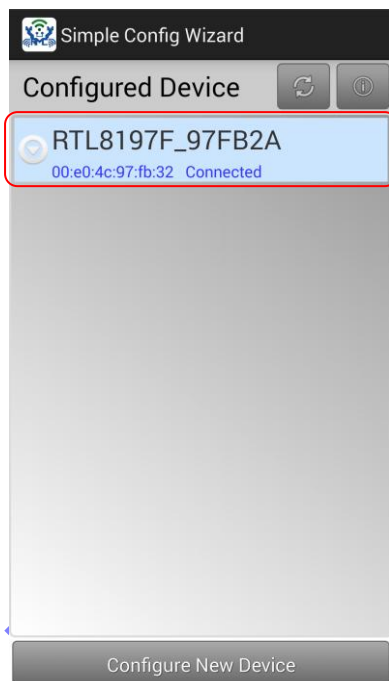


(2) Select “Remove device” operation. Then, the removed device will dismiss from the list.

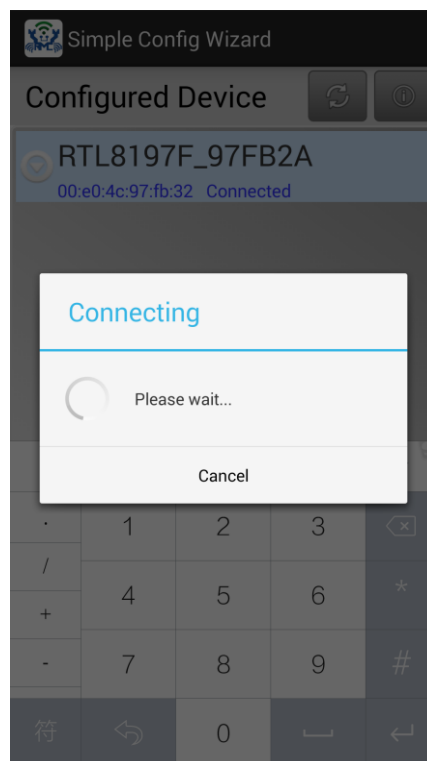
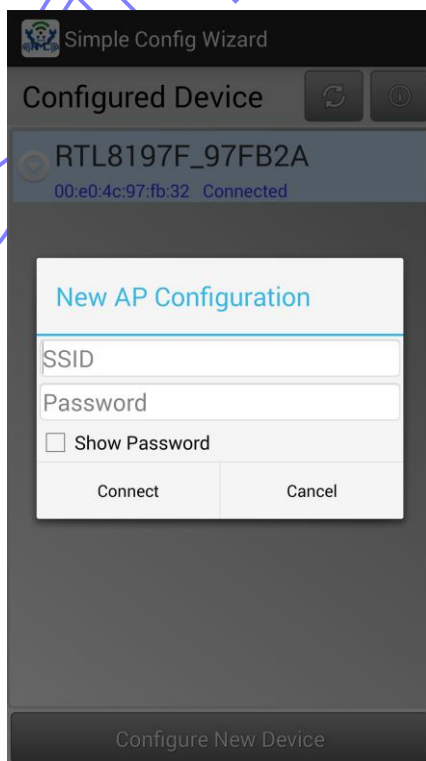
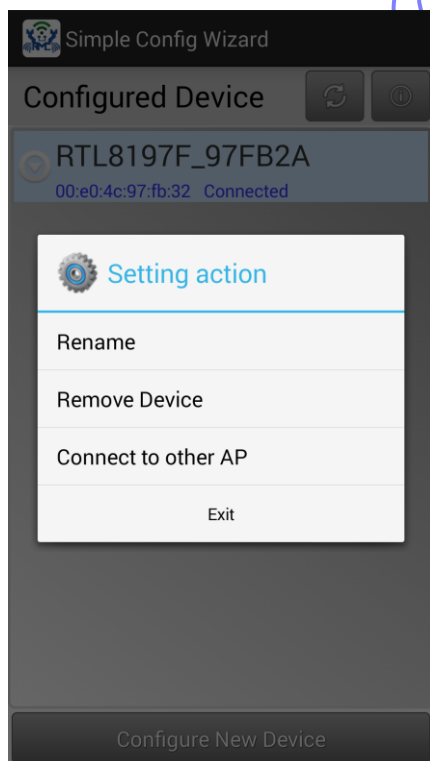


4.3 Connect to other AP

(1) If the device support new AP profile controller, the operation is enabled. Select one device to operate, such as RTL8197F_97FB2A.



(2) Select “Connect to other AP” operation. And input SSID/passowrd of new AP, and select “connect”. Then, the device will connect to your specific AP.



5 Reference

N/A

Realtek